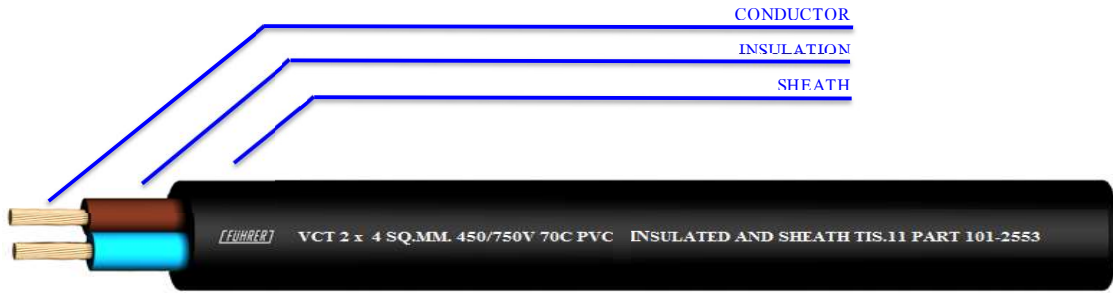


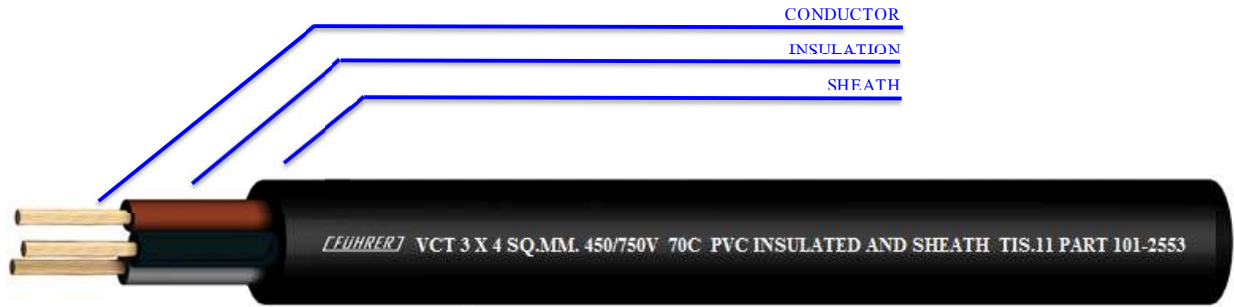
## 450/750 V 70°C PVC INSULATED AND SHEATHED



CONDUCTOR :	Flexible stranded annealed copper wire Size 4 mm <sup>2</sup> up to Size 35 mm <sup>2</sup>	CLASSIFICATION:	Maximum conductor temperature 70°C Circuit voltage not exceeding 750 volt
INSULATION :	Polyvinyl chloride (PVC) Light Blue , Brown	TESTING VOLTAGE:	2,500 VAC
SHEATH :	Polyvinyl chloride (PVC) Black colour	REFERENCE STANDARD:	TIS. 11 PART 101-2553

Nominal Cross Sectional area (mm <sup>2</sup> )	Conductor		thickness of Insulation (mm)	thickness of Sheath (mm)	Overall Diameter	Maximum continuous current rating in free air (A)	Minimum insulation resistance at 70°C (MΩ-Km)	cable weight (approx.) Kg/Km	standard length (m)
	Diameter of wires (Max.)	Diameter (mm) (Approx.)							
4	0.31	2.59	0.9	1.6	14.5	30	0.0084	250	100/C
6	0.31	3.60	0.9	1.6	16.0	39	0.0071	340	100/C
10	0.41	4.79	1.1	1.8	20.0	51	0.0068	540	500/D
16	0.41	5.88	1.1	2.2	23.0	73	0.0050	770	500/D
25	0.41	7.32	1.3	2.4	27.5	97	0.0048	1130	500/D
35	0.41	8.61	1.3	2.6	31.0	140	0.0041	1470	500/D

C:Packing in coil.

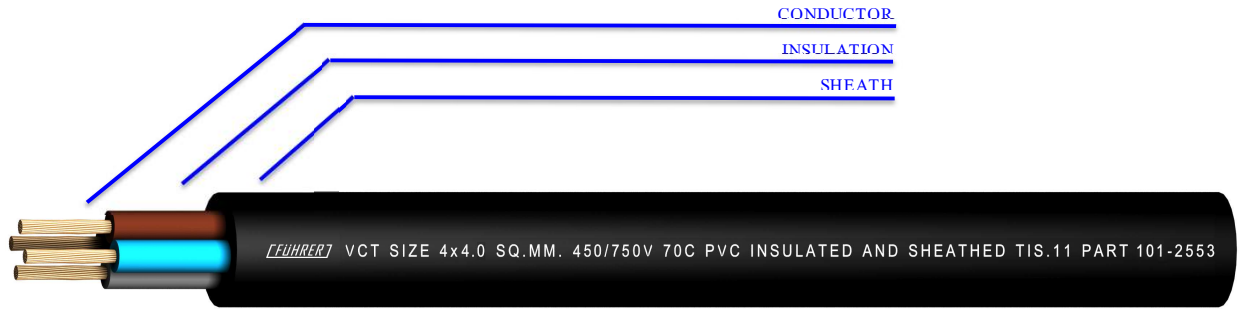


CONDUCTOR :	Flexible stranded annealed copper wire Size 4 mm <sup>2</sup> up to Size 35 mm <sup>2</sup>	CLASSIFICATION:	Maximum conductor temperature 70°C Circuit voltage not exceeding 750 volt
INSULATION :	Polyvinyl chloride (PVC) Brown , Black , Grey	TESTING VOLTAGE:	2,500 VAC
SHEATH :	Polyvinyl chloride (PVC) Black colour	REFERENCE STANDARD:	TIS. 11 PART 101-2553

Nominal Cross Sectional area (mm <sup>2</sup> )	Conductor		thickness of Insulation (mm)	thickness of Sheath (mm)	Overall Diameter	Maximum continuous current rating in free air (A)	Minimum insulation resistance at 70°C (MΩ-Km)	cable weight (approx.) Kg/Km	standard length (m)
	Diameter of wires (Max.)	Diameter (mm) (Approx.)							
4	0.31	2.59	0.9	1.6	15.5	26	0.0084	300	100/C
6	0.31	3.60	0.9	1.8	17.5	34	0.0071	420	100/C
10	0.41	4.79	1.1	2	21.5	43	0.0068	670	500/D
16	0.41	5.88	1.1	2.4	25.0	63	0.0050	960	500/D
25	0.41	7.32	1.3	2.6	30.0	83	0.0048	1420	500/D
35	0.41	8.61	1.3	2.8	33.5	102	0.0041	1850	500/D

C:Packing in coil.

450/750 V 70°C PVC INSULATED AND SHEATHED



CONDUCTOR :	Flexible stranded annealed copper wire Size 4 mm <sup>2</sup> up to Size 35 mm <sup>2</sup>	CLASSIFICATION:	Maximum conductor temperature 70°C Circuit voltage not exceeding 750 volt
INSULATION :	Polyvinyl chloride (PVC) Light Blue , Brown , Black , Grey	TESTING VOLTAGE:	2,500 VAC
SHEATH :	Polyvinyl chloride (PVC) Black colour	REFERENCE STANDARD:	TIS. 11 PART 101-2553

Nominal Cross Sectional area (mm <sup>2</sup> )	Conductor		thickness of Insulation (mm)	thickness of Sheath (mm)	Overall Diameter	Maximum continuous current rating in free air (A)	Minimum insulation resistance at 70°C (MΩ-Km)	cable weight (approx.) Kg/Km	standard length (m)
	Diameter of wires (Max.)	Diameter (mm) (Approx.)							
4	0.31	2.59	0.9	1.8	17.0	26	0.0084	380	100/C
6	0.31	3.60	0.9	2.0	19.5	34	0.0071	540	100/C
10	0.41	4.79	1.1	2.2	24.0	47	0.0068	860	500/D
16	0.41	5.88	1.1	2.6	28.0	63	0.0050	1220	500/D
25	0.41	7.32	1.3	2.8	33.0	83	0.0048	1800	500/D
35	0.41	8.61	1.3	3.1	37.0	102	0.0041	2380	500/D

C:Packing in coil.